

TIMER / CREDIT BOARD

Part no. TC4-NRI rev 4e

- Coin pulses can be applied via the 22 pin edge connector or via the L COIN ribbon cable socket. The R COIN socket is not used.
- Coins are registered in 10c increments on the Coin Meter.
- Connecting an optional 4 digit LED display panel will allow viewing of the time remaining in minutes and seconds or hours and minutes.
- Operation time can be extended by adding more coins before or during the on time.
- A warning beeper may be connected. It will pulsate for the last 20 seconds of running time.
- Anti strimming security. Coin pulse widths greater than 250mS will be rejected and cause the coin inputs to lock-out for 10 seconds.

EDGE CONNECTOR PINOUT

SOLDER SIDE

1	-
2	-
3	\$5 token input
4	10c coin switch input
5	20c coin switch input
6	50c coin switch input
7	\$1 coin switch input
8	\$2 coin switch input
9	-
10	-
11	Warning beeper output, open collector.
12	Coin Meter output
13	Timer output, open collector.
14	Optional LED 4 digit display, serial data
15	Optional LED 4 digit display, clock
16	Relay common
17	Relay normal closed
18	Relay normal open
19	Power input: 12 Volts DC, unregulated
20	" " " " "
21	Power and coin switch return (GND)
22	" "

TIMER / CREDIT BOARD
Part no. TC4-NRI rev 4e

COIN ACCEPTER INPUT HEADER - LCOIN

These coin inputs are also routed to the edge connector (see page 1).

Pin Number	Function	Coin Value
1	GND	-
2	12v	-
3	channel 5	\$2.00
4	channel 6	\$5.00
5	-	-
6	Disable (lockout)	
7	channel 1	\$0.50
8	channel 2	\$0.10
9	channel 3	\$0.20
10	channel 4	\$1.00

DIP SWITCH SETTINGS

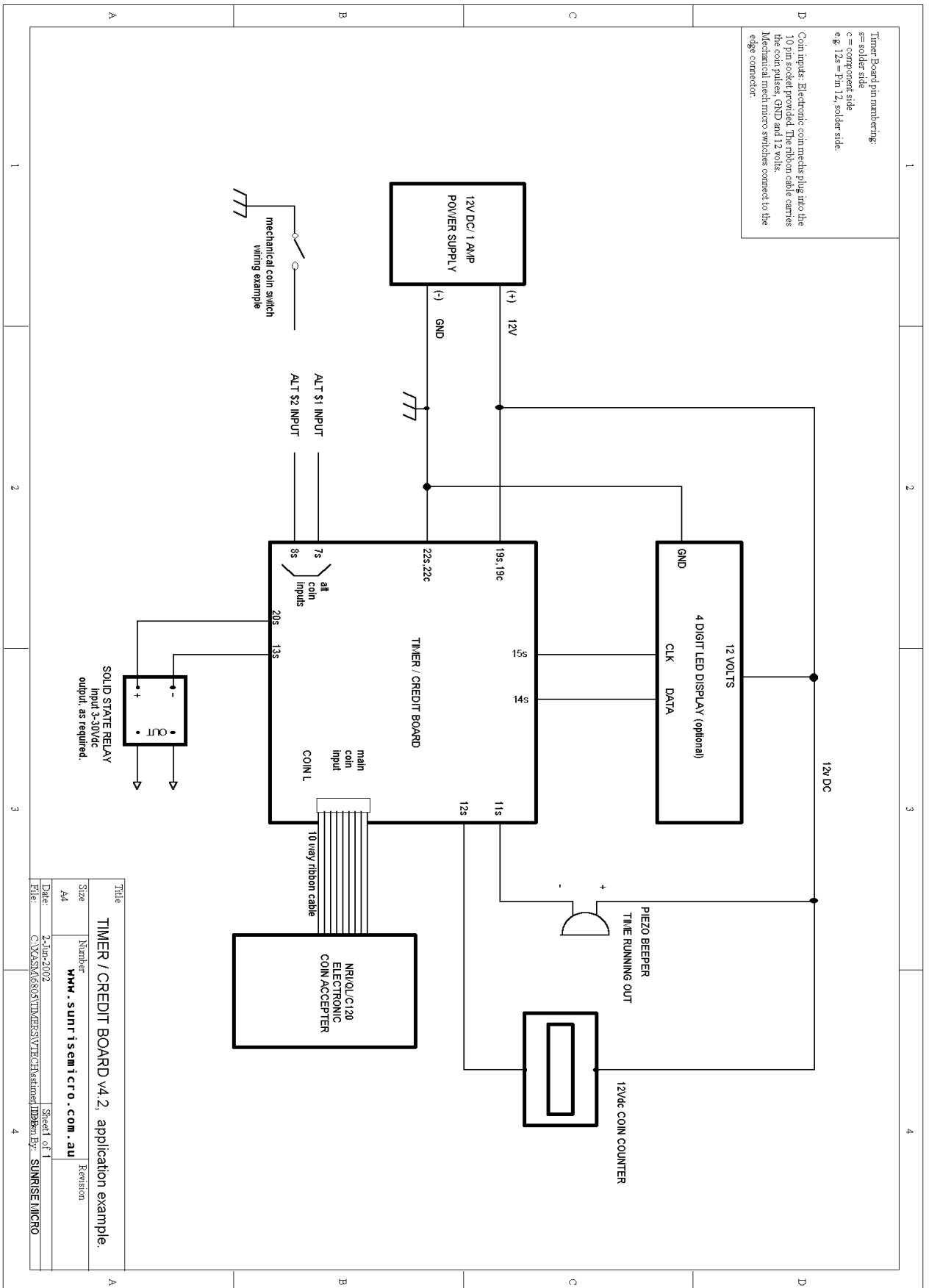
Price to start	1	2	3	4	5	6	7	8
40 cents						OFF	OFF	OFF
50 cents						ON	OFF	OFF
60 cents						OFF	ON	OFF
80 cents						ON	ON	OFF
\$1						OFF	OFF	ON
\$2						ON	OFF	ON
\$3						OFF	ON	ON
\$4						ON	ON	ON

The Dip Switch also controls the on-time for the price to start. The range of adjustment is from 10 seconds up to 5 min:10 sec in 10 sec increments. One or more of switches 1 to 5 should be turned ON as required. Each switch adds time as follows.

- SW 1 Adds 10 sec
- SW 2 Adds 20 sec
- SW 3 Adds 40 sec
- SW 4 Adds 80 sec
- SW 5 Adds 160 sec

TIMER / CREDIT BOARD

Part no. TC4-NRI rev 4e



Timer Board pin numbering:
 s= solder side
 c = component side
 e.g. 12s = Pin 12, solder side.
 Coin inputs: Electronic coin mechs plug into the 10 pin socket provided. The ribbon cable carries the coin pulses, GND and 12 volts. Mechanical mechniro switches connect to the edge connector.

Title		TIMER / CREDIT BOARD v4.2, application example.	
Size	Number	Revision	
A4	www.sunrisemicro.com.au		
Date:	2-Jun-2002	Sheet 1 of 1	
File:	C:\XAS\N6305\TIMER\SWTCH\astimed\ipbpm.pbr	Drawn By:	SUNRISE MICRO