

TIMER / CREDIT BOARD

Part no. TC4-NRI rev 3

- Coin pulses can be applied via the 22 pin edge connector or via the L COIN ribbon cable socket. The R COIN socket is not used.
- Coins are registered in 10c increments on the Coin Meter.
- Connecting an optional 4 digit LED display panel will allow viewing of the time remaining in minutes and seconds or hours and minutes.
- Operation time can be extended by adding more coins before or during the on time.
- A warning beeper may be connected. It will pulsate for the last 20 seconds of running time.
- Anti strimming security. Coin pulse widths greater than 250mS will be rejected and cause the coin inputs to lock-out for 10 seconds.

EDGE CONNECTOR PINOUT

SOLDER SIDE

1	-
2	-
3	\$5 token input
4	10c coin switch input
5	20c coin switch input
6	50c coin switch input
7	\$1 coin switch input
8	\$2 coin switch input
9	-
10	-
11	Warning beeper output, open collector.
12	Coin Meter output
13	Timer output, open collector.
14	Optional LED 4 digit display, serial data
15	Optional LED 4 digit display, clock
16	Relay common
17	Relay normal closed
18	Relay normal open
19	Power input: 12 Volts DC, unregulated
20	" " " " "
21	Power and coin switch return (GND)
22	" "

TIMER / CREDIT BOARD

Part no. TC4-NRI rev 3

COIN ACCEPTER INPUT HEADER - LCOIN

These coin inputs are also routed to the edge connector (see page 1).

Pin Number	Function	Coin Value
1	GND	-
2	12v	-
3	channel 5	\$2.00
4	channel 6	\$5.00
5	-	-
6	Disable (lockout)	
7	channel 1	\$0.50
8	channel 2	\$0.10
9	channel 3	\$0.20
10	channel 4	\$1.00

DIP SWITCH SETTINGS

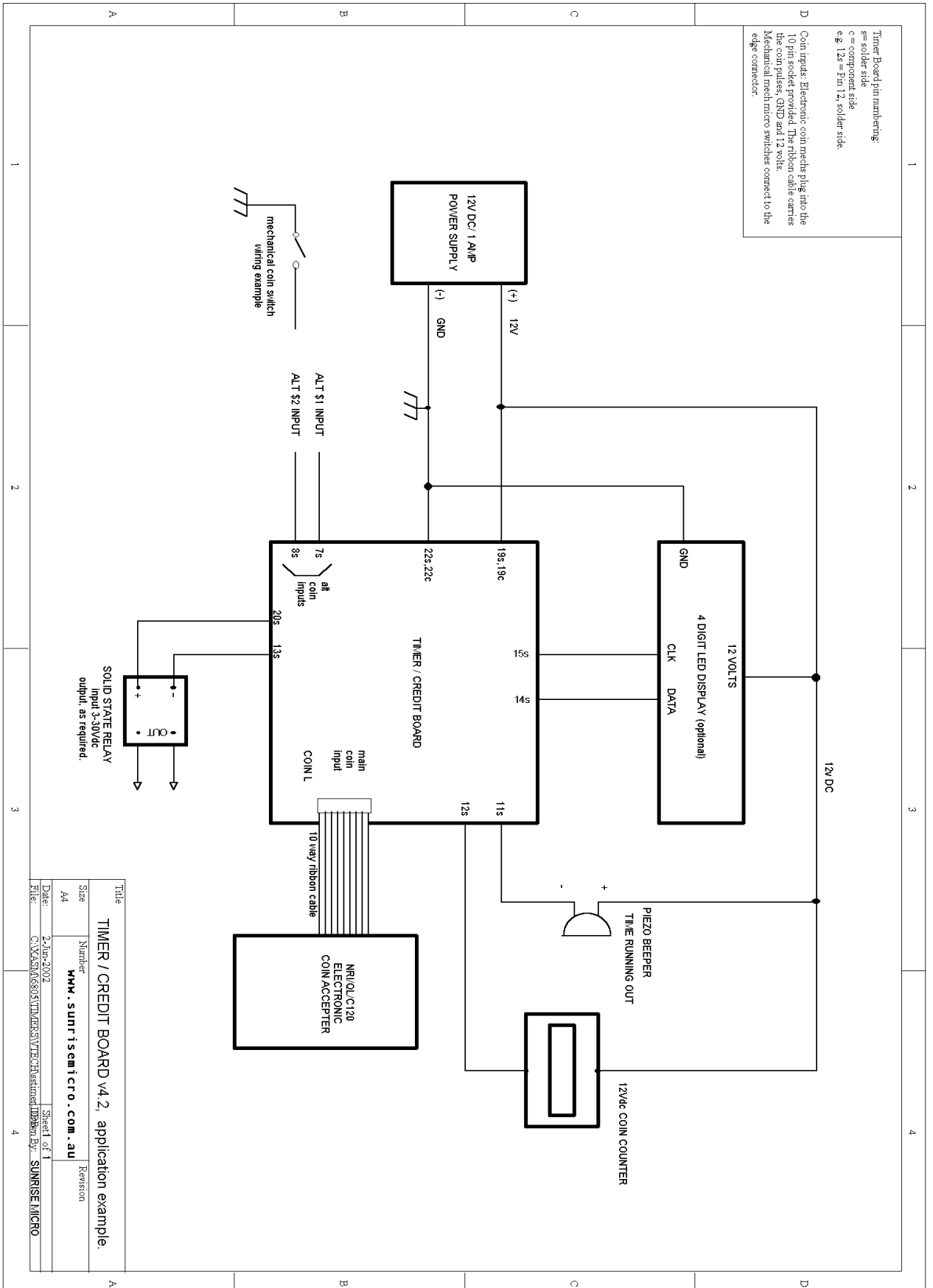
Price to start	1	2	3	4	5	6	7	8
40 cents						OFF	OFF	OFF
50 cents						ON	OFF	OFF
60 cents						OFF	ON	OFF
80 cents						ON	ON	OFF
\$1						OFF	OFF	ON
\$2						ON	OFF	ON
\$3						OFF	ON	ON
\$4						ON	ON	ON

The Dip Switch also controls the on-time for the price to start. The range of adjustment is from 10 seconds up to 5 min:10 sec in 10 sec increments. One or more of switches 1 to 5 should be turned ON as required. Each switch adds time as follows.

SW 1 Adds 10 sec
SW 2 Adds 20 sec
SW 3 Adds 40 sec
SW 4 Adds 80 sec
SW 5 Adds 160 sec

TIMER / CREDIT BOARD

Part no. TC4-NRI rev 3



Title		TIMER / CREDIT BOARD v4.2, application example.	
Size	Number	Revision	
A44	HYV . sunr1semi.cro . com . au		
Date:	2-Jan-2002	Sheet 1 of 1	
File:	C:\XAS\N6305\TIMER\SVT\CH\estimated.dwg	Drawn By:	SUNRISE MICRO